





Station Road, Ware, SG12 9PL

Westwood Leber is delighted to present this stunning two-bedroom duplex apartment in a prestigious landmark conversion, just a stone's throw from Ware's mainline station, offering direct services to London Liverpool Street. Formerly a railway goods shed, this historic building has been meticulously transformed into modern, open-plan, warehouse-style apartments.

The property boasts spacious, beautifully presented accommodation, including an expansive open-plan living and dining area, a stylish, fully-equipped kitchen, and two generously sized double bedrooms featuring large, characterful arched windows. A luxurious bathroom adds to the appeal of this unique residence, blending contemporary design with stunning period features. Additional benefits include an allocated parking space and the convenience of being just 30 seconds from Ware station.



W WESTWOODLEBER

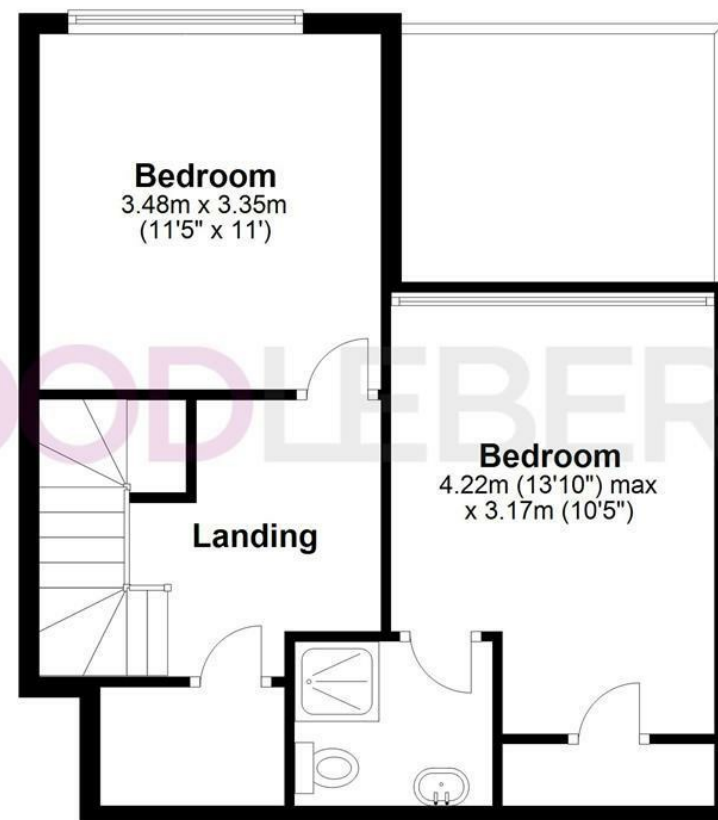
Ground Floor

Approx. 45.4 sq. metres (488.2 sq. feet)



First Floor

Approx. 40.7 sq. metres (437.8 sq. feet)



Total area: approx. 86.0 sq. metres (926.0 sq. feet)

THE FLOORPLAN IS FOR ILLUSTRATIVE PURPOSES ONLY AND IS NOT TO SCALE. Measurements and features are approximate and may differ from the actual property. Verify all details independently; no liability is accepted for errors or omissions.

Property marketing provided by www.fotomarketing.co.uk













 WESTWOODLEBER